



Our Vision

Enye accelerates social innovations by empowering aspiring engineers to address local challenges.

Our mission is to bridge the technical gap in developing countries in order to foster an ecosystem of social growth and innovation.

We train engineers that build innovation.

Why Enye?

Quick and Effective: Our 2-month program provides our partners with competent and technically skilled engineers to execute on product development. This allows partners to focus on product innovation and business strategy.



Immediate Impact: By design, Enye engineers are entrepreneurial-minded and translate the skills cemented at partner organizations towards social impactful solutions.

Fair Capital Exchange: Partners can be economical in acquiring quality technical expertise, while engineers can earn 2-3x more compared to local wages.

Why Our Program Works?

- **Distributed first approach** - Our program is completely remote, reinforcing a culture focused on communication and accountability.
- **Collaborative** - We group our engineers into agile teams of 3. This enables cross collaboration so that they gain the communication and development skills essential for successful engineers.
- **Agile Methodologies** - We teach our engineers to iterate quickly and develop even quicker.
- **Product-driven** - From ideation to prototyping, our engineers learn the entire lifecycle of product development through feedback and iteration.
- **Extensive vetting process** - We ensure that each student engineer meets the highest of standards both technically.

Product Offering Map

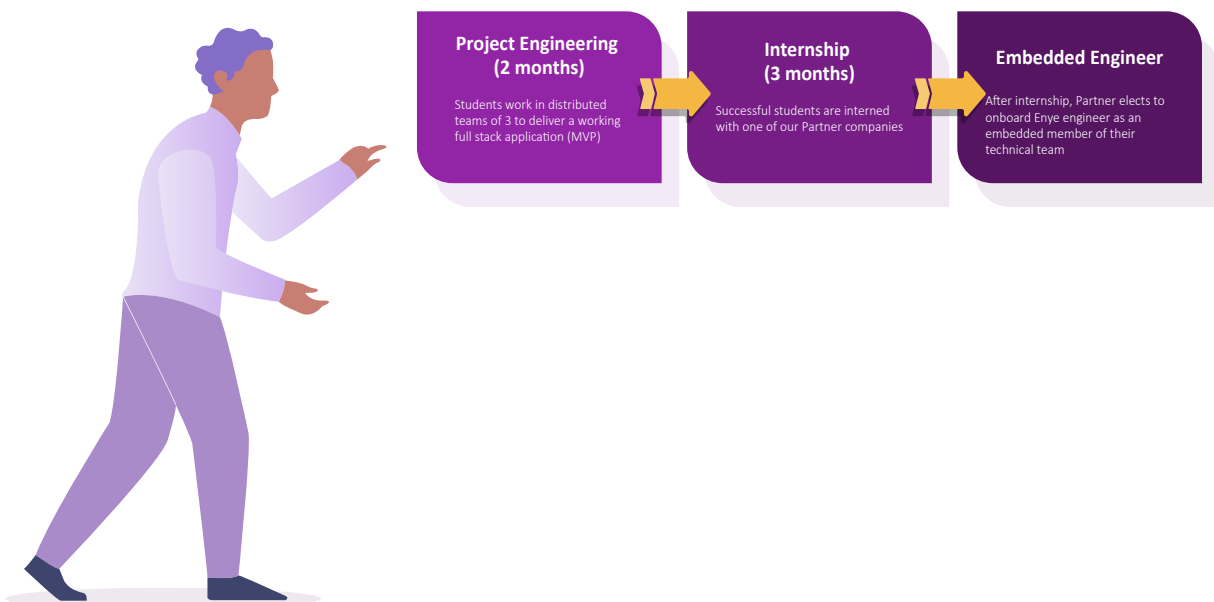
Overview

Our mission is dual fold. First, it is to give aspiring engineers the tools and mentorship needed for them to upskill to modern software engineers. Second, we want to provide technical support to social impactful ideas in Nigeria. Given these two goals, we offer two separate programs; The Engineering Program and the Founder Program.

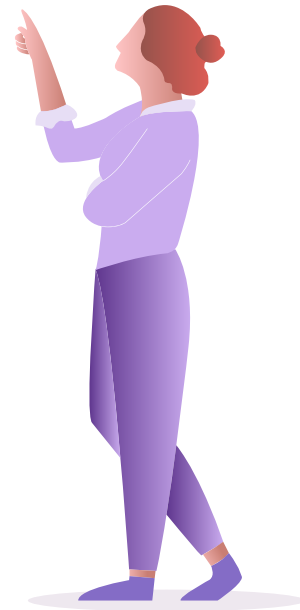
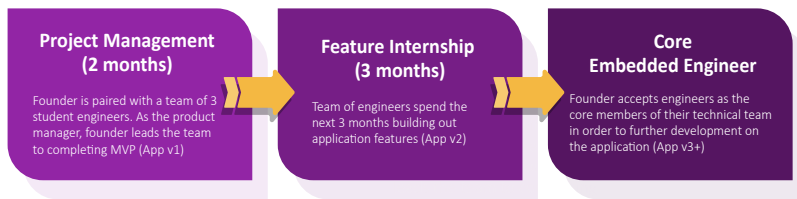
Definitions

- **Student** - Individual that is going through our engineering upskilling program.
- **Partner** - Established company that interns and/or hires one of our engineers.
- **Founder** - Individual with social impactful idea that we pair with student engineers.
- **MVP** - Minimum Viable Product.
- **Embedded Engineer** - Student engineer, that has completed the program and partner internship, and will be incorporated into the partner company.

Engineering Program



Founder Program



Service Fee Structure

Overview

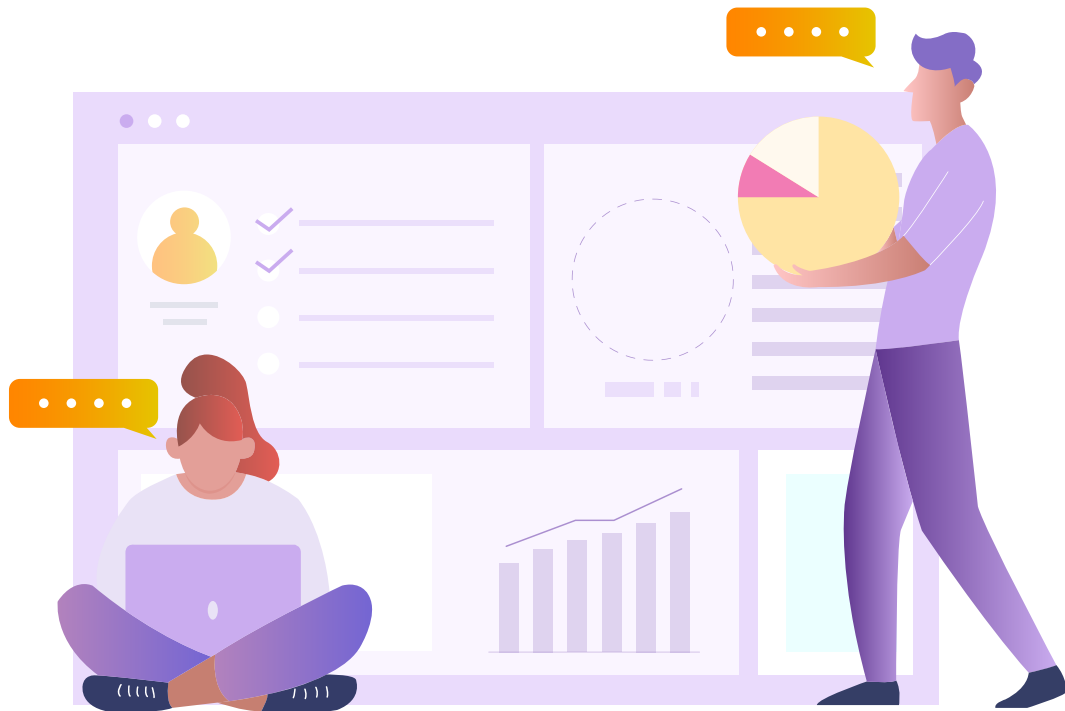
Our 501(c)(3) offers three different tiers of solutions. The tiers reflect the engineers relative experience level. All monetary transfers in exchange for services are considered quid pro quo donations. Payments are then offset against our good faith valuation of the services. The remaining value is considered a donation, in compliance with the [IRS Tax Code](#).

Service Offerings

- **Intern** - Our interns have graduated the program and can commit 25 hours a week.
- **Engineer** - Our engineers have graduated the program, received paid internship experience and can commit to a full time schedule of 40 hours a week.
- **Advanced Engineer** - Our engineers have graduated the program, received paid internship, employment and can commit to a full time schedule of 40 hours a week.

Monthly Tax Voucher Calculation

According to Glassdoor, the average software developer in Nigeria makes 200,000 Naira a month. This averages roughly to \$3.50 per hour. Enye bases our good faith valuations from these market statistics. Our fees for interns are comparatively higher due to the fact that the students forgo several months of income to attend our program. They are given the opportunity to recoup this time investment through our internship fee structure. Due to the nature of good faith valuations, our intern service offering is the most tax deductible.



Tax Deductions

- **Intern** - Quid Pro Quo Donation (\$800 - \$8 hr) - Good Faith Valuation (\$300 - \$3.00 hr) = Tax Deduction (\$500.00 - 62.5% of payment is deductible).
- **Engineer** - Quid Pro Quo Donation (\$1000 - \$6.25 hr) - Good Faith Valuation (\$560 - \$3.50 hr) = Tax Deduction (\$440 - 56% of payment is deductible).
- **Advanced Engineer** - Quid Pro Quo Donation (\$1400 - \$8.75 hr) - Good Faith Valuation (\$640 - \$4.00 hr) = Tax Deduction (\$760 - 54.3% of payment is deductible).

Tax Voucher Issuance

Payments are received via Paypal and tax vouchers are issued at the end of the year. Our 501(c)(3) status can be found [here](#).